

XXVIII Peko Kevad

Kõrve, Võru county

www.peko.ee

ORGANIZER: Väraska Orienteerumisklubi Peko

Head organizer: Raul Kudre +372 525 6695

Secretary: Mare Parve

Finish: Einar Raudkepp

Course setter: Madis Oras

Saturday, April 13

Long distance,
Starts from 13:00

Sunday, April 14

Shortened long distance
(MW21A middle)
Starts from 10:00

TERRAIN AND MAP

Map

Map corrections autumn 2018 – spring 2019; mapper Madis Oras; old map Tammeveski-Kapera ([2010024](#)).

Map_scale

Map scale is 1: 10 000 or 1:15 000, depending on the course length. Map iscale is 1:5 000 in children's string course. H=5m.

Terrain.

Terrain is located around the steep slopes of river Piusa. Runnability varies from good to poor. Maximum height difference is up to 35 meters. Irregular network of paths and roads. Approximately 75% of the terrain is covered with forest.

COURSES

Individual start race on both days. Long distance on Day 1, shortened long distance on Day 2. MW21A will have middle distance on Day 2.

Course setter is Madis Oras.



Control description

Control numbers are printed next to the control circle. There are additional control descriptions at the start.

Refreshment control

MW21, M18, 35, 40, 45, 50 have 1-2 refreshment controls on Day 1. Water and sport drink will be offered.

Embargoed and dangerous areas

Close to the competition center there is an embargoed area, which is marked on the map but not marked in the terrain. Organizers will be checking that no one crosses the embargoed area.

Private areas marked with olive green are embargoed areas. There are public roads open for traffic crossing the competition terrain – please pay attention when crossing the road!

Punching system

SPORTident punching system. Rental SI cards are available for 1,5 EUR per day. Changing the SI number at the competition centre costs 1 EUR.

Start

Children's string course has an open start (Start 3) – children can choose their own start time. Start 3 is opened:

Day 1: 13:00-15:00

Day 2: 10:00-12:00

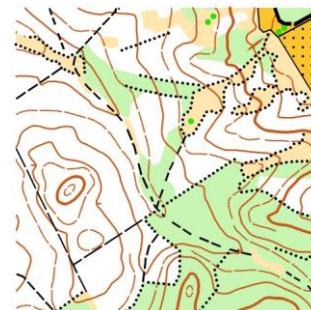
There are organizers at the Start 3 who guide the children.

Prestart 2 min.

Distance to the Start 1,2,3:

Day 1 300m

Day 2 200m



Toetajad



VÄRSKA
ORIGINAAL



VÄRSKA
SANATOORIUM

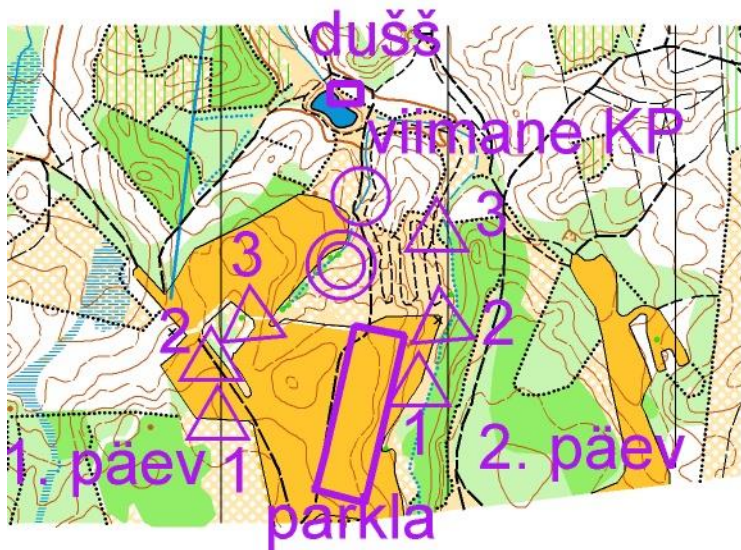


EESTI KULTUURKAPITAL

coop

Põlva





COMPETITION CENTRE

Competition centre is located in Kõrve. Marking starts from Lindora–Vana–Vastseliina nr 25193 and Antrkuva–Meremäe nr 25168 roads. Additional markings to the competition centre start from road nr 25125.

GPS coordinates 57,787397 27,351157



Start fee	MW 8–14	5 € / day
	MW16–18, 60–75	8 € / day
	MW 21–55	12 € / day
	Open course	8 € / day

Late entries will have a 1,5x start fee.

OTHER

GPS

Selected runners in M21 and W21 will wear a GPS device.

Showers

Sauna and warm shower at the competition centre.

Food

Small cafe at the competition centre.

Parking

Parking is close to the competition centre. Parking fee 1 EUR.

Children care

Children care at the competition centre. Together with the entry at Osport, please make preregistration for the children care as well.

Prizes

Prizes will be given to the best runners in each class according to the sum of the results.

Small prize for all the participants in classes MW8-10.

Accommodation

See: <http://www.visitsetomaa.ee/>; <http://www.visitvoru.ee>

Setomaa Turismitalo <http://www.setotalu.ee/>

Piisa Ürgoru guest house <http://www.puhkemaja.ee>

Hard floor accommodation: Obinitsa külakeskus

Price: 3euro/person/night

Preregistration needed: Taavi Möldri 5248093 obinitsa.kulakeskus@setomaa.ee

Location:: <https://goo.gl/maps/Vpx26szFkHH2>