

XXIX Peko Kevad

Lutepää, Setomaa county

www.peko.ee

ORGANIZER: Värskä Orienteerumisklubi Peko

Head organizer: Raul Kudre +372 525 6695

Course setter: Rein Zaitsev

Entry and finish: Einar Raudkepp (einar@sesame.ee)

TERRAIN AND MAP

Map

Map corrections autumn 2019 – spring 2020; mapping Madis Oras; old map Värskä-Korela ([2004001](#)).

Map_scale

Map scale is 1: 10 000 on both days. In children's strong course (MW8-10NR), map scale is 1:5 000. H=2,5m.

Terrain.

Runnability varies from good to very good. Maximum height difference is up to 25 meters. Regular network of paths and roads. Approximately 95% of the terrain is covered with forest.

Punching system

SPORTIdent punching system. Rental SI cards are available for 2 EUR per day. Penalty of 50 EUR applies in case of lost or damaged SI card. Changing the SI number at the competition centre costs 1 EUR.



Saturday, April 11

Long distance,
Starts from 13:00

Peko 30 – party at Värskä Culture Centre, 20:00

Sunday, April 14

Middle distance
Starts from 11:00

CLASSES

M8NR	W8NR
M10NR	W10NR
M12	W12
M14	W14
M16	W16
M18	W18
M21A	W21A
M21B	W21B
M35	W35
M40	W40
M45	W45
M50	W50
M55	W55
M60	W60
M65	W65
M70	W70
M75	W75
M80	
Open Course	

Start

Start intervall is 2 minutes on both days.

Children's string course has an open start (Start 3) – children can choose their own start time. There are organizers at the Start 3 who guide the children. Start 3 is opened:

Day 1: 13:00-15:00

Day 2: 11:00-13:00

COURSES

Long distance on Day 1, middle distance on Day 2.

Class	Course length, KM	
	Day 1	Day 2
M8NR	1,5	1,5
M10NR	2,5	2,5
M12	3	2,5
M14	5	4
M16	6,5	4,5
M18	8	5
M21A	12	6,5
M21B	6,5	4,5
M35	9,5	6
M40	8	5
M45	6,5	5
M50	6,5	5
M55	5,5	4,5
M60	5	4,5
M65	5	4,5
M70	4	3,5
M75	3,5	3
M80	3,5	3

Klass	Course length, KM	
	Day 1	Day 2
W8NR	1,5	1,5
W10NR	2,5	2,5
W12	3	2,5
W14	3,5	3
W16	5	4
W18	6,5	4,5
W21A	9	5
W21B	5	4
W35	5,5	4,5
W40	5,5	4,5
W45	5	4
W50	5	4
W55	4,5	3,5
W60	4	3,5
W65	3,5	3
W70	3,5	3
W75	4	2,5
Open	5	4

Embargoed and dangerous areas

Private areas marked with olive green are embargoed areas. Competition area is located in Mustoja nature reserve area. Participants are not allowed to leave trash on the terrain.

Toetajad



ENTRY

Start fee	MW 8–14	5 € / day
	MW16–18, 60–75	8 € / day
	MW 21–55	12 € / day
	Open course	8 € / day (entry at the competition centre)

Entry is open until April 6th, 2020 at O-sport (www.osport.ee): einar@sesame.ee

Account owner: Värška Orienteerumisklubi Peko
Address: Pikk 48, Värška, Võrumaa 64001, Estonia
Account number IBAN: EE242200001120074669
Bank: Swedbank AS, 8 Liivalaia Street, 15040 Tallinn, Estonia
SWIFT/BIC code: HABAE2X

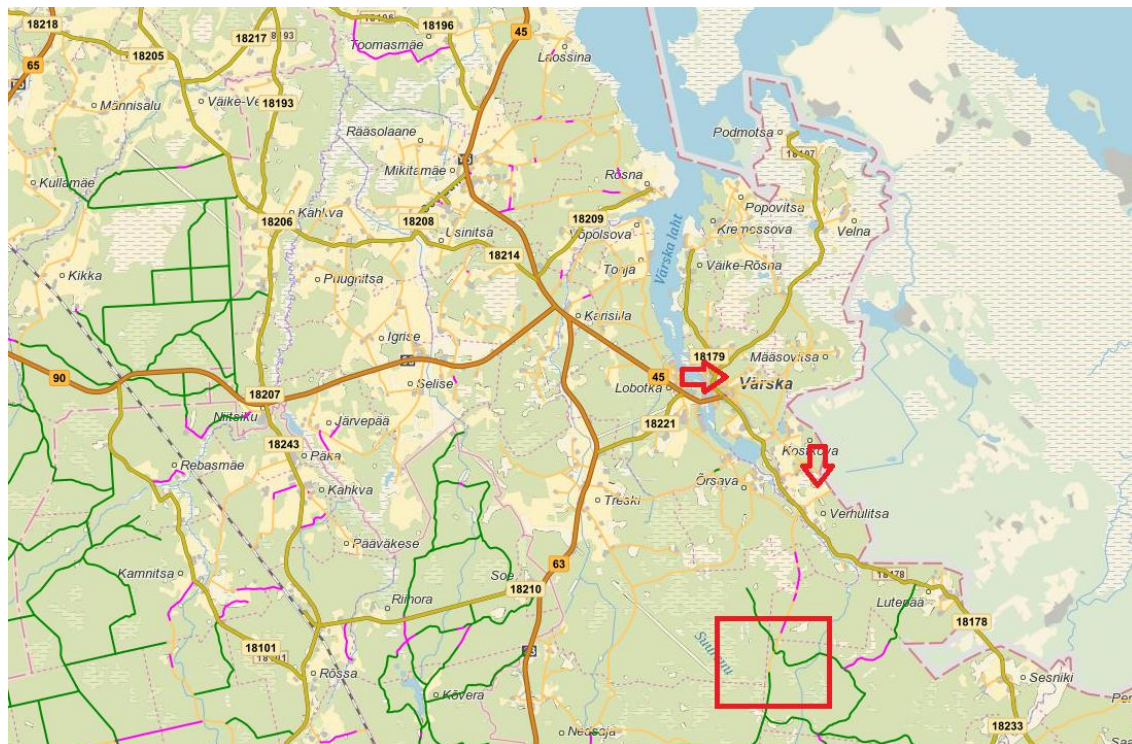
All bank costs must be covered by the payer.

Late entries will have a 1,5x start fee.

COMPETITION CENTRE

Competition centre is located in Lutepää village, 3km from Verhulitsa village. Markings to the competition centre start from Värška-Saatse road nr 18178.

GPS coordinates 57.912893, 27.650605



OTHER

Peko 30 Party

Värskä OK Peko celebrates its 30 year birthday in 2020. For this reason, we are happy to invite all participants of Peko Kevad to Peko 30-year party on Saturday, April 11th at 20:00. Live music and Peko bar will keep up a good mood. Entry is for free but participants can support Peko youth athletes by donating entry fee of their own choice to the „Peko youth“ box. Party takes place in Värskä Culture centre.

GPS

Selected runners in M21 and W21 will wear a GPS device.

Showers

Sauna and warm shower at the competition centre.

Food

Small cafe at the competition centre.

Parking

Parking is close to the competition centre on the roads and open areas. Early arrivers can park closer to the competition centre.

Parking fee 1 EUR.

Children care

Children care at the competition centre (for free). Together with the entry at OSPORT, please make preregistration for the children care.

Prizes

Prizes will be given to the best runners in each class according to the sum of the results.

Small prize for all the participants in classes MW8-10.

Accommodation

See: <http://www.visitsetomaa.ee/>; <http://www.visitvoru.ee>