

XXIX Peko Kevad

Kolossova village, Setomaa county

www.peko.ee

ORGANIZER: Värska Orienteerumisklubi Peko
Head organizer: Raul Kudre | raul48@hotmail.ee, +372 525 6695
Secretary: Mare Parve | mare.parve@gmail.com
Finish, IT: Einar Raudkepp | einar@sesame.ee, +372 505 1047
Course setter: Madis Oras

TERRAIN AND MAP

Map

Map corrections autumn 2021; mapper Madis Oras; old map Värska-Korela ([2004001](#)).

Map scale

Map scale is 1:5 000 – 1:15 000, 1:5 000 in children's string course.
Map scales for every class are specified in Courses table. H=2,5m.

Terrain.

The terrain has sandy ground, where runnability varies from very good to good. Maximum height difference is up to 25 meters. Regular network of paths and roads. Approximately 95% of the terrain is covered with forest.

COURSES

Individual start race on both days. Long distance on Day 1, middle distance on Day 2.

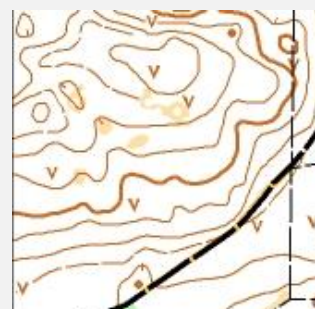
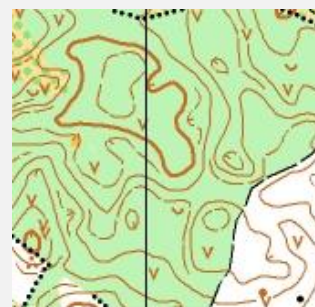
Saturday, April 16

Long distance,
Starts from 13:00

Sunday, April 17

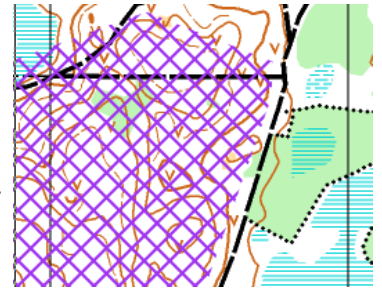
Middle distance
Starts from 11:00

Map examples



Embargoed and dangerous areas

Competition is taking place in the nature reserve area of Mustoja. On the terrain, there is a habitat of the protected animal species, which is **not allowed to pass**. The area is marked on the map with an out-of-bounds area symbol (purple). The area is not marked in the forest.



The competition takes place in the border zone. The control line of the Republic of Estonia is marked with **white-black border posts** (see picture). **At least 10 meters before the border, the control line is marked with warning signs (STOP, SEIS), the crossing of the warning sign is STRICTLY PROHIBITED.**

Punching system

SPORTIdent AIR+ punching system. Rental SI cards are available for 1,5 EUR per day. Changing the SI number at the competition centre costs 1 EUR.

Start

Children's string course and Open courses have an open start (Start 3) – children and open course runners can choose their own start time. Start 3 is opened **13:00-15:00** on Saturday and **11:00-12:30** on Sunday. There are organizers at the Start 3 who guide the children.

Other classes have 2 minutes start interval.

Distance to start:

	I day	II day
Start 1	0,7 km	1,5 km
Start 2	1,0 km	0,3 km
Start 3	0,8 km	0,4 km



Finish

The finish time is fixed on the finish line. In case the SI station in the forest is not working, please inform organizer in the finish area and for the proof of punch a compost imprint must be shown. Finish line must be passed even if not completing the whole course.

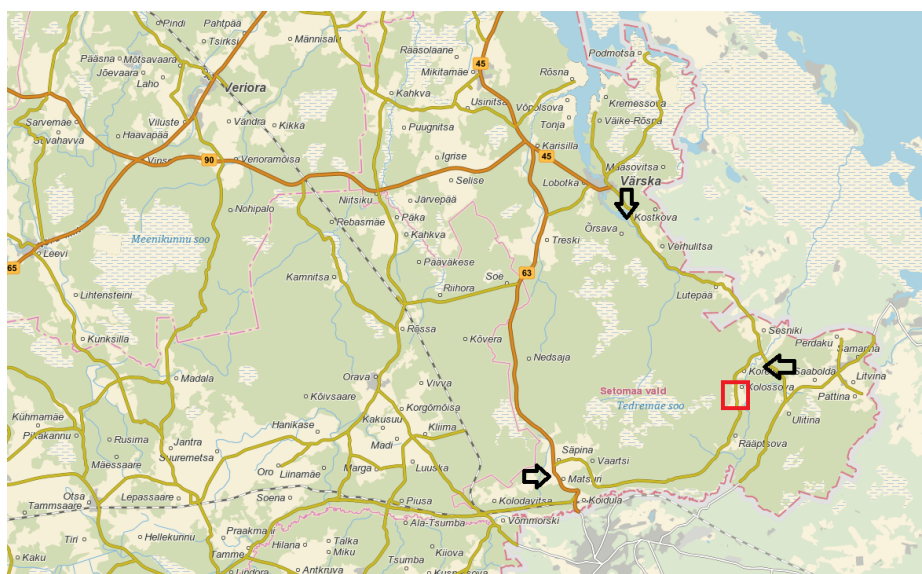
Control descriptions

Control numbers are printed next to the control circle. There are additional control descriptions at the start.

COMPETITION CENTRE

Competition centre is located in [Kolossova village](#). Marking starts from Värskaa-Saatse no 18178 road from Sesniki village on Piusa river. Google Maps avoids 1 km section of Russia (so called Saatse boot) and guides to the competition center along forest roads. However, we recommend driving through Värskaa and the asphalted Värskaa-Saatse road, also passing the Saatse boot.

GPS coordinates 57.874884, 27.713242.



OTHER

GPS

Selected runners in M21 and W21 will wear a GPS device.

Showers

Warm shower at the competition centre.

Food

Small cafe at the competition centre.

Parking

Parking is close to the competition centre. Parking fee 1 EUR.

Children care

Children care at the competition centre. Together with the entry at Osport, please make preregistration for the children care as well.

Prizes

Prizes will be given to the best three runners in every class according to the sum of two days results. Small prize for all the participants in classes MW8-10.

Accommodation

<http://www.visitsetomaa.ee/>

<http://www.visitvoru.ee>



Sponsors

